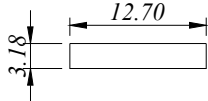
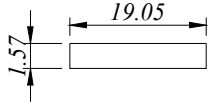
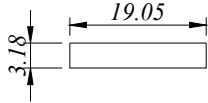
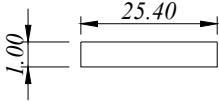
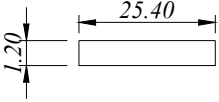
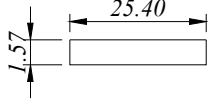
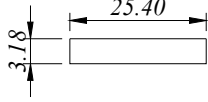
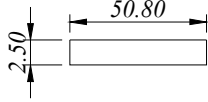
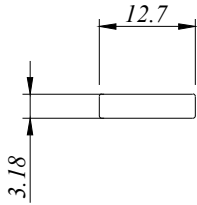


*FB - Flat Bar*

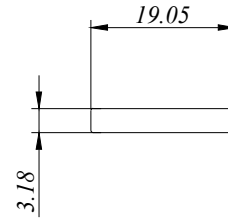
*15 SERIES*

PROFILE NO.	PICTURE OF PROFILE	WEIGHT (KG/M)	THICKNESS	PACKING IN BUNDLE (PCS)
			AREA PERIMETER	
FB 150432		0.109	3.18 MM 30.880 MM	20
FB 150616		0.081	1.57 MM 39.785MM	20
FB 150632		0.164	3.18 MM 44.460 MM	20
FB 150810		0.073	1.00 MM 52.800 MM	50
FB 150812		0.084	1.20 MM 52.170 MM	50
FB 150816		0.109	1.57 MM 54.000 MM	30
FB 150832		0.219	3.18 MM 57.160 MM	20
FB 151625		0.344	2.50 MM 106.600 MM	20

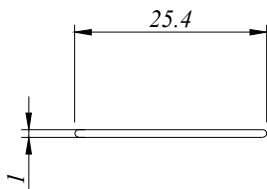
All Profiles are standard length 6.1 M for FB Series



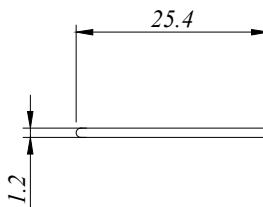
FB 150432  
0.109 Kg/M  
AP : 30.880 MM



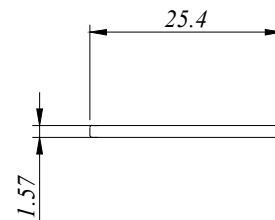
FB 150632  
0.164 Kg/M  
AP : 44.460 MM



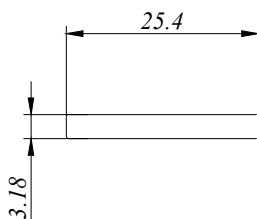
FB 150810  
0.073 Kg/M  
AP : 52.800 MM



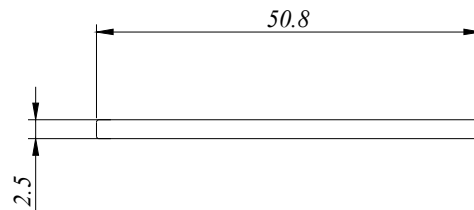
FB 150812  
0.048 Kg/M  
AP : 52.170 MM



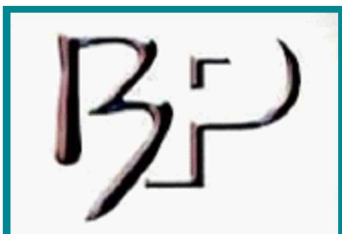
FB 150816  
0.109 Kg/M  
AP : 54.000 MM



FB 150832  
0.219 Kg/M  
AP : 57.160 MM



FB 151625  
0.344 Kg/M  
AP : 106.600 MM



**BP Aluminium Extrusion Sdn. Bhd.**

No.15 & 16, 1C KKIP Selatan, Industrial Zone 2, KKIP,  
88450, Jalan Sepanggar, Menggatal.  
t : 60-88-499333, 499111 f : 60-88-499222  
b\_p\_a\_e@yahoo.com